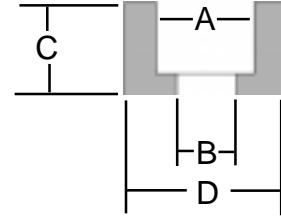


## Tombstone Gun Grips

Gun Screw Specifications



Screw Size	.W	.H	.T	.A	.B	.D	.C
2	.1285	.073	.0825	.151	.095	.252	.112
4	.1725	.0985	.105	.185	.110	.252	.113
5	.1950	.105	.120	.200	.125	.252	.200

Tombstone gun grip screw kits consist of a screw, a ferrule (illustrated above) and a press-fit nut which has the same diameter and height as the ferrule. The screws are of the slotted fillister head type. Number 2 has 56 threads/inch (2-56). Number 4 has 40 threads/inch (4-40). Number 5 also has 40 threads/inch (5-40). The ferrule for the 2-56 screw will also work with most Fillister slotted head 3-48 screws (the nut would need to be re-tapped for the larger thread size).

Holes for the ferrule and nut should be made approximately .002 to .005 inches smaller than the diameter of the ferrule or nut, to allow for a press fit. The OD of the ferrule and the nut is knurled with deep, straight knurling, which bites into the grip material and keeps the nut and ferrule securely in place.

The depth of the hole should be slightly more than the height of the screw or ferrule, so that the metal part does not project above the surface of the grip, and is slightly below surface to allow for polishing and sanding of the grip. Buffing the grip with the ferrule or nut to close to the grip surface (or above it) can pick up a black smear of metal oxide which stains the buffing wheel and the grip surface.

The mounting hardware is made of brass. You can plate or chemically treat the brass to make it black, gold, silver, or other colors if so desired. The only color available from Tombstone is the natural color of the brass. (If silver, gold, or black finish is desired, it can be provided in minimum quantities of 5,000 parts.) The screws are stainless steel, and have a steel color. They are not available in small lots with other colors or materials, but in lots of 5,000 or more, special runs can be manufactured to meet your color requirements.